



B2B HUB

Company formation and licensing in one platform. **Over 240 jurisdictions**

December, 2025, version 1.1

New B2B Hub case tracking. You can view your case progress using your UCN (Unique Case Number) at b2bhub.ltd/tracking



Still more grooming tips at B2BHUB.LTD

CONTENT

- 4 Services
- 5 Turnkey solution
- 6 Proposal
- 7 Delivery package
- 8 Jurisdiction data
- 9 Company formation in Belgium
- 10 FAQ for company formation in Belgium
- 11 Top 10 benefits of incorporating in Belgium
- 12 Common Mistakes to Avoid When Registering a Company in Belgium
- 13 Belgium Business Visa and Residency Options for Entrepreneurs
- 14 Updated 2026 Belgium Corporate Law Changes
- 15 Case Studies: Successful Company Formations in Belgium by B2B Hub
- 16 Major traditional banks and neo banks in Belgium
- 17 How to Open a Bank Account After Company Formation in Belgium
- 18 Economy of Belgium
- 19 Taxation in Belgium
- 20 Company Maintenance Fees in Belgium: What You Need to Know
- 21 Key Reasons to Set Up a Company in Belgium
- 22 Belgium Company Accounting Records: Mandatory Compliance Guide
- 23 Roles of Directors, Shareholders and Company Secretary in Belgium
- 24 Choosing a Company Name in Belgium: Rules and Restrictions
- 25 Discover Belgium: Business Environment, Tax Benefits and Opportunities
- 26 Why to choose B2B Hub for company formation in Belgium
- 27 TIBC
- 28 B2B Hub formation platform
- 29 Track you case with unique 8 digit code
- 30 Payment methods
- 31 Testimonials
- 34 Counties in which we provide services

This document provides a comprehensive overview of the company formation process, outlining the legal requirements, procedural steps, compliance obligations, and post-incorporation responsibilities involved in establishing and maintaining a corporate entity. It offers practical guidance, regulatory explanations, insights into banking and taxation, common mistakes to avoid, and illustrative case studies. Such documents are commonly used by entrepreneurs, investors, and business operators to ensure transparency, make informed decisions, and navigate the registration process with clarity and confidence. It is designed as a complete, ready-to-use reference for anyone preparing to form a company and manage its ongoing obligations.



A New Digital Asset Backed by a Real Global Company

B2BHUB

B2BHUB Token is the official utility token of B2B Hub LTD, a fast-growing international corporate services provider supporting company formation, licensing, banking assistance, yacht registration, and compliance worldwide.



token . b2bhub . ltd

- Utility from Day One
- Access exclusive benefits, discounts, priority support, and future digital services across the B2B Hub ecosystem.
- Transparent & Trustworthy
- Backed by a registered UK company with a real client base, real revenue, and a global footprint.
- Built for Growth
- Designed to integrate seamlessly into upcoming digital tools, automated workflows, and premium membership programs.
- Community Focused
- Early supporters gain access to private sales, platform rewards, and long-term ecosystem utilities.

Your performance is our top priority!

Whether you:

- Want to register legal entity
 - Extend business internationally
 - Obtain license for financial business
 - Offer trading platform to your clients
 - Open corporate or personal bank account
-



COMPANY FORMATION



INSURANCE LICENSE



BANKING LICENSE



VESSEL REGISTRATION



FOREX LICENSE



BANK ACCOUNT



CRYPTO LICENSE



TRADING PLATFORM



**PAYMENT INSTITUTIONS
LICENSE**



**CITIZENSHIP
REGISTRATION**



TURNKEY B2B SOLUTIONS

A turnkey solution is a type of system built end-to-end for a customer that can be easily implemented into a current business process. It is immediately ready to use upon implementation and is designed to fulfill a certain process.

Belgium

Legal form: BVBA, NV/SA

Timeline: 5-10 days



DOCUMENTS CHECKLIST

1. Passport
2. Proof of Residence

ONE TIME FEE:
\$ 3000

PAYMENT OPTIONS:
Bank transfer USD, EUR, GBP;
Credit card; USDT ERC20;
USDT TRC20

BRAKEDOWN

- * Governmental fees
- * Local legal address
- * Legal fees
- * Company stamp
- * Tax navigator
- * Standard agreement templates
- * Payroll navigator

EXTRA SERVICES

COMPANY DOCUMENTS WITH APOSTILE DHL DELIVERY
\$ 700

LEGAL OPINION
\$ 1400



100%
MONEY-BACK
GUARANTEE

Delivery

A complete package, delivered and ready to use. Everything you need to operate immediately.

- * Certificate of incorporation
- * Articles of association, memorandum and other legal documents
- * Tax guidance
- * Company stamp



Jurisdiction data

REGISTRAR	Crossroads Bank for Enterprises
WEBSITE	https://... More at www.b2bhub.ltd
ABBREVIATION	CBE
EMAIL	Contact form on the website.
PHONE	+32 800 12 033

CAPITAL	Brussels
OFFICIAL LANGUAGES	Dutch, French, German
POPULATION	11,686,140
CURRENCY	Euro
ISO 4217	EUR



B2B HUB


Company formation in Belgium



Belgium is recognized as a strategic location for company formation due to its central position within Europe, well-developed infrastructure, and access to a large and diverse market. Entrepreneurs seeking to establish a presence in the European Union often consider Belgium company registration advantageous because of its stable economic environment and robust legal framework. The country offers a transparent regulatory system that supports various types of business entities, making it suitable for a wide range of commercial activities. Setting up a company in Belgium provides access to a skilled workforce and benefits from Belgium's extensive network of international trade agreements.

The process of business registration in Belgium involves several key steps designed to ensure compliance with local laws and regulations. Registering a company in Belgium typically requires the preparation of foundational documents that outline the company's structure and governance. These documents must be submitted to the appropriate authorities, and the company must be entered into the official commercial register. Additionally, companies are required to obtain necessary permits or licenses relevant to their specific business activities. Belgium company formation services often assist entrepreneurs by facilitating these administrative procedures and ensuring adherence to statutory requirements.

Choosing Belgium for company formation also reflects the country's commitment to fostering a favorable business climate. The legal system provides clear rules on corporate governance, shareholder rights, and financial reporting, which contribute to a predictable operating environment. Moreover, Belgium's multilingual population and cultural diversity make it easier for international businesses to integrate and operate effectively. Overall, the process of setting up a company in Belgium is structured to support both domestic and foreign investors, making Belgium a preferred jurisdiction for business registration in Europe.



FAQ for company formation in Belgium



Q: What types of companies can be formed in Belgium?

A: The most common types of companies that can be formed in Belgium are limited liability companies, joint-stock companies, and partnerships.

Q: What are the requirements for registering a company in Belgium?

A: The requirements for registering a company in Belgium include at least one founder, a registered office address in Belgium, a company name that complies with local laws, and payment of the relevant registration fees.

Q: How long does it take to register a company in Belgium?

A: The registration process for a company in Belgium can take approximately 1-2 weeks.

Q: What are the documents required to register a company in Belgium?

A: The documents required include the company's Articles of Association, details of the company's founders, a registered office address, and payment of the relevant registration fees.

Q: Can foreigners own a company in Belgium?

A: Yes, foreigners can own and operate a company in Belgium.

Q: What are the tax implications of forming a company in Belgium?

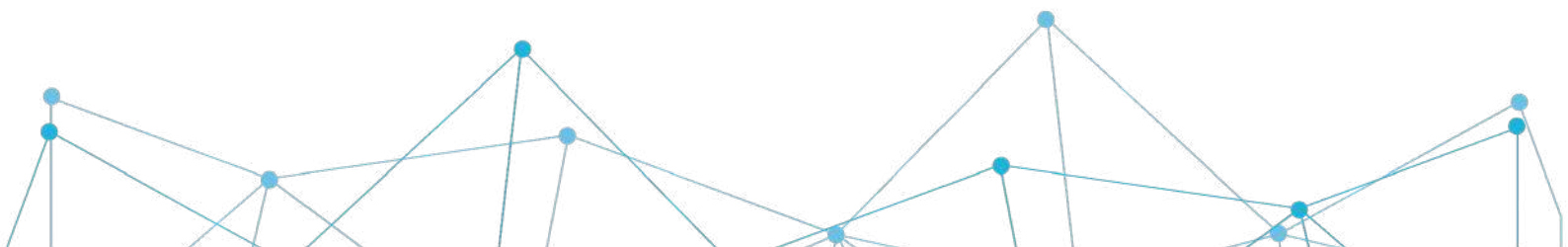
A: Companies in Belgium are subject to corporate income tax, which is currently set at a rate of 25%. There are also various incentives and exemptions available to companies that qualify.

Q: What are the ongoing compliance requirements for a company in Belgium?

A: Companies in Belgium are required to file annual financial statements, maintain accurate financial records, and comply with various reporting and disclosure requirements. There may also be industry-specific regulations and compliance requirements.

Q: Can I use my Belgian company to do business outside of Belgium?

A: Yes, you can use your Belgian company to conduct business anywhere in the world, as long as you comply with the relevant laws and regulations in those jurisdictions. However, you may need to obtain additional licenses and permits to operate in certain countries.



Top 10 benefits of incorporating in Belgium



-
1. Incorporating in Belgium offers foreign investors a stable and well-established legal framework that ensures consistent enforcement of corporate laws and contractual obligations.
 2. Belgium's strong international reputation as a business-friendly jurisdiction enhances the credibility of companies formed there, facilitating trust with global partners and clients.
 3. Registering a company in Belgium provides strategic access to the European Union's single market, allowing seamless trade and investment opportunities across member states.
 4. The country's robust investor protection mechanisms safeguard shareholder rights and promote transparent corporate governance, which is essential for foreign investors.
 5. Belgium's competitive tax environment, including various incentives and treaties, supports efficient tax planning and can optimize the overall fiscal burden for incorporated businesses.
 6. Business registration in Belgium benefits from a transparent regulatory system that clearly defines compliance requirements, reducing uncertainty for new enterprises.
 7. The procedures for company formation in Belgium are streamlined and efficient, enabling foreign investors to establish operations with relative ease and clarity.
 8. Incorporating in Belgium enhances a company's global business profile by associating it with a jurisdiction known for high standards in corporate responsibility and international trade.
 9. The operational flexibility allowed under Belgian corporate law enables businesses to adapt their structures and governance to meet evolving market demands and investor needs.
 10. Long-term advantages of Belgium incorporation include access to skilled labor, advanced infrastructure, and a supportive economic environment conducive to sustainable growth.
- 

Common Mistakes to Avoid When Registering a Company in Belgium



When considering company formation in Belgium, foreign entrepreneurs often encounter several common pitfalls that can complicate or delay the process. Understanding these mistakes when registering a company in Belgium is essential to ensure a smooth and compliant business registration.

One frequent error involves misunderstandings about the legal requirements. Belgium has specific rules regarding company types, minimum capital, and incorporation procedures. Entrepreneurs sometimes choose an inappropriate business structure without fully appreciating the legal and tax implications. For instance, selecting a public limited company (SA/NV) when a private limited company (SRL/BV) would be more suitable can lead to unnecessary complexity and costs. To avoid this, it is crucial to thoroughly research the types of companies available and consult with local legal experts to determine the best fit for your business goals.

Incomplete or incorrect documentation is another common issue. Belgium requires a range of documents for Belgium business registration, including notarized deeds, proof of address, identification documents, and sometimes business plans or financial forecasts. Missing or improperly prepared paperwork can cause significant delays. Ensuring all documents meet the official standards and are translated if necessary helps prevent administrative setbacks.

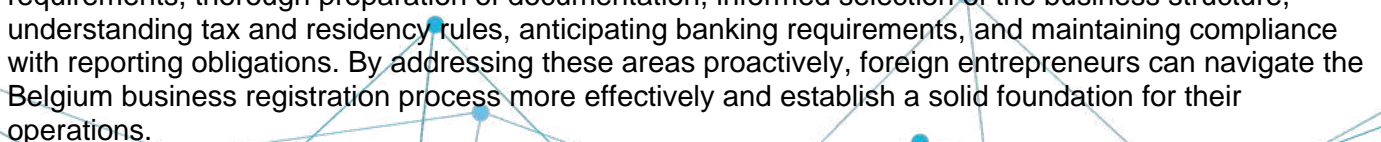
Tax obligations are often overlooked or misunderstood by foreign entrepreneurs. Belgium has a complex tax system with corporate income tax, VAT, social security contributions, and other levies. Failure to register for VAT or misunderstanding tax reporting deadlines can result in penalties. Engaging with a local tax advisor early in the company formation process is advisable to clarify tax responsibilities and optimize tax compliance.

Misinterpreting residency and director requirements is another typical mistake. Belgium requires at least one director who may need to be a resident or have a local address, depending on the company type. Foreign entrepreneurs sometimes assume they can appoint directors without considering these residency rules, which can complicate company registration. Clarifying these requirements beforehand and, if necessary, appointing a local representative can facilitate smoother registration.

Banking challenges also frequently arise during Belgium business registration. Opening a corporate bank account often requires meeting strict due diligence and anti-money laundering checks. Entrepreneurs may underestimate the documentation and time needed to establish banking relationships. Preparing comprehensive corporate documents and demonstrating the legitimacy of the business purpose can help overcome these hurdles.

Finally, failing to comply with ongoing reporting and administrative responsibilities is a significant mistake. Once the company is registered, there are regular obligations such as annual accounts filing, maintaining statutory registers, and notifying authorities of changes in company structure or directors. Neglecting these duties can lead to fines or even dissolution of the company. Establishing a compliance calendar and working with local accountants or corporate service providers ensures continuous adherence to Belgian regulations.

In summary, avoiding mistakes when registering a company in Belgium involves careful attention to legal requirements, thorough preparation of documentation, informed selection of the business structure, understanding tax and residency rules, anticipating banking requirements, and maintaining compliance with reporting obligations. By addressing these areas proactively, foreign entrepreneurs can navigate the Belgium business registration process more effectively and establish a solid foundation for their operations.



Belgium Business Visa and Residency Options for Entrepreneurs



Entrepreneurs seeking to establish or expand their business activities in Belgium have access to several business visa and residency options tailored to foreign founders and investors. Belgium offers a range of permits and visas that facilitate the entry and residence of entrepreneurs, including startup visas, investor visas, entrepreneur visas, and work permits linked to business activities. Understanding these pathways is essential for navigating the country's immigration framework and complying with relevant regulations.

One common option is the entrepreneur visa Belgium, which allows foreign nationals to reside and conduct business activities in the country. To qualify, applicants generally need to demonstrate a viable business plan, sufficient financial resources to support the enterprise, and relevant professional experience. Authorities typically require documentation such as a detailed business plan, proof of investment capital, evidence of accommodation in Belgium, and background information including identity and financial records. Approval often involves evaluation by regional economic or immigration authorities who assess the potential economic benefit and feasibility of the proposed business.

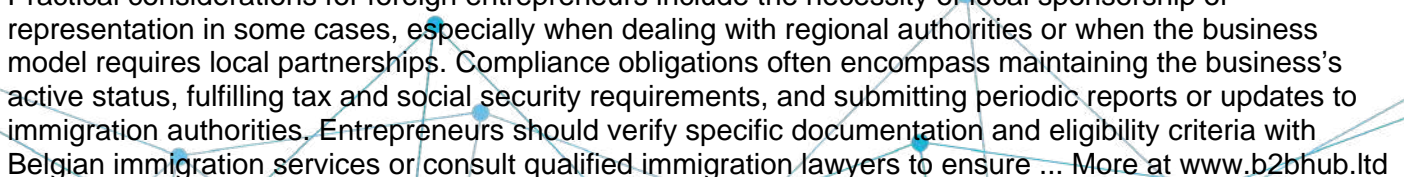
Another pathway is the investor visa Belgium, designed for individuals willing to make a significant financial investment in the Belgian economy. While specific investment thresholds are not universally fixed, applicants must show proof of substantial capital injection into an existing or new business, or other qualifying economic contributions. Documentation usually includes financial statements, investment contracts, and evidence of funds' origin. This route may also require endorsement or sponsorship by local authorities or economic development agencies, reflecting the government's interest in attracting foreign capital.

For innovative startups and founders, Belgium offers a startup visa in Belgium that supports entrepreneurs aiming to launch innovative projects. Eligibility criteria often emphasize the innovative nature of the business, scalability potential, and the entrepreneur's qualifications. Applicants must provide a comprehensive business plan, proof of innovation or intellectual property, and financial means to sustain themselves and the business during the initial phase. Regional startup hubs or incubators may play a role in facilitating applications or providing local sponsorship, which can be a practical consideration for applicants.

Work permits tied to business activity represent another category relevant to entrepreneurs who intend to work actively in their company. These permits require demonstrating the necessity of the foreign national's involvement in the business operations and compliance with labor regulations. Supporting documents typically include employment contracts, business registration certificates, and proof of the company's viability. Employers or the business entity often act as sponsors in this context, ensuring that the entrepreneur's work aligns with Belgian labor and immigration standards.

Regarding residency options for entrepreneurs in Belgium, temporary residence permits are commonly issued initially, allowing entrepreneurs to establish their business and reside legally. These permits are generally renewable based on continued business activity and compliance with immigration rules. Over time, entrepreneurs may become eligible for permanent residency, subject to meeting residency duration requirements, integration criteria, and ongoing economic contribution. The transition from temporary to permanent residency involves coordination with municipal and regional immigration offices.

Practical considerations for foreign entrepreneurs include the necessity of local sponsorship or representation in some cases, especially when dealing with regional authorities or when the business model requires local partnerships. Compliance obligations often encompass maintaining the business's active status, fulfilling tax and social security requirements, and submitting periodic reports or updates to immigration authorities. Entrepreneurs should verify specific documentation and eligibility criteria with Belgian immigration services or consult qualified immigration lawyers to ensure ... More at www.b2bhub.ltd



Updated 2026 Belgium Corporate Law Changes




The 2026 corporate law changes in Belgium introduce several important legislative and regulatory updates affecting company formation, governance, compliance, and cross-border operations. These updates aim to modernize the corporate framework and enhance transparency while aligning with evolving European Union directives. One significant area of reform concerns company formation, where adjustments to capital requirements and procedural formalities have been implemented to streamline the incorporation process, particularly for small and medium-sized enterprises. This facilitates easier market entry but requires careful attention to new minimum capital thresholds expressed in USD equivalents.

Corporate governance rules have also been refined, with enhanced director responsibilities and stricter compliance standards. Directors are now subject to clearer duties regarding risk management, sustainability reporting, and conflict of interest disclosures. These changes underscore the importance of robust internal controls and governance frameworks to mitigate liability risks. Reporting obligations have expanded, notably in financial transparency and non-financial disclosures, reflecting Belgium's commitment to EU-wide corporate social responsibility initiatives. Companies must ensure their reporting systems are updated to meet these enhanced requirements.

Capital requirements have been recalibrated, affecting both public and private companies, with implications for equity structure and shareholder rights. The regulatory environment now demands greater clarity in capital maintenance and distribution rules, which impacts dividend policies and financing strategies. Cross-border business operations face new compliance considerations due to updated rules on foreign direct investment notifications and anti-money laundering measures, necessitating thorough due diligence and coordination with local authorities.

Transitional provisions provide a phased approach for companies to align with the new regulations, offering specific deadlines and compliance windows to adapt governance practices and reporting mechanisms. Companies operating in Belgium should review these timelines carefully to avoid penalties and ensure smooth compliance.

Overall, the corporate law updates Belgium 2026 reflect a broader trend toward increased regulatory scrutiny and enhanced corporate accountability. Businesses are advised to conduct comprehensive reviews of their governance structures, compliance programs, and reporting processes. Verification with local counsel or official government sources is essential to navigate the complexities of these changes effectively and to maintain compliance with Belgium corporate compliance 2026 standards. Understanding the changes to company law in Belgium is crucial for informed decision-making and strategic planning in this evolving legal landscape.



Case Studies: Successful Company Formations in Belgium by B2B Hub




A manufacturing trading company sought to establish operations in Belgium to access European markets but faced complex regulatory requirements and challenges in securing a local bank account. The client engaged B2B Hub for company formation in Belgium. B2B Hub provided comprehensive corporate setup services Belgium, including business registration in Belgium, navigating local compliance standards, and facilitating communication with regulatory bodies. Additionally, B2B Hub assisted in opening a corporate bank account by leveraging its network with Belgian financial institutions. This support enabled the client to complete registration efficiently and begin trading activities without delay. The company now operates in full compliance with Belgian laws and maintains smooth financial operations.

A consulting firm specializing in management advisory services aimed to expand its footprint into Belgium but encountered difficulties understanding local corporate governance and tax obligations. Through B2B Hub company formation Belgium services, the firm received tailored guidance on corporate structure options and compliance requirements. B2B Hub managed the entire registration process and provided ongoing compliance support, including assistance with statutory filings and regulatory updates. This partnership allowed the consulting firm to establish a legally compliant entity and focus on client delivery, benefiting from B2B Hub's expertise in business registration in Belgium and corporate setup services Belgium.

An e-commerce company looking to launch a distribution hub in Belgium required swift company formation and help with VAT registration and customs compliance. The client turned to B2B Hub for assistance with company formation in Belgium. B2B Hub coordinated the registration of the legal entity, advised on VAT registration procedures, and ensured adherence to import-export regulations. The client also benefited from B2B Hub's support in setting up banking relationships suited to e-commerce operations. These services collectively facilitated a smooth market entry and ongoing regulatory compliance, illustrating a successful company formation story with B2B Hub's involvement.

A technology startup focused on software development planned to incorporate in Belgium to benefit from the country's innovation ecosystem but was unfamiliar with local legal and financial requirements. B2B Hub company formation Belgium services provided end-to-end support, from initial business registration in Belgium to compliance management and banking setup. The startup received assistance in drafting necessary documentation, registering with relevant authorities, and establishing a corporate bank account. This enabled the client to concentrate on product development while ensuring the corporate entity met all Belgian regulatory standards. The engagement demonstrates how B2B Hub's corporate setup services Belgium can streamline successful company formation stories for tech enterprises.

These anonymized case studies highlight B2B Hub's role in facilitating diverse company formations in Belgium. By addressing challenges related to registration, compliance, banking, and regulatory navigation, B2B Hub supports clients across industries in achieving legally compliant and operationally effective business setups. Each example reflects the practical benefits of partnering with B2B Hub for company formation in Belgium and related corporate setup services Belgium.



Major traditional banks and neo banks in Belgium



Companies seeking to open a corporate bank account in Belgium have access to a range of banking options, including both traditional banks in Belgium and emerging neo-banks in Belgium. Each type of institution offers distinct features and benefits, making it important for businesses to understand the differences when considering business banking in Belgium.

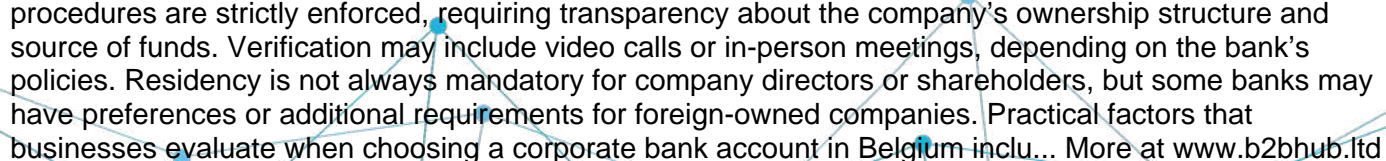
Traditional banks in Belgium are well-established financial institutions with long histories and extensive branch networks. They are subject to comprehensive regulatory oversight by Belgian and European authorities, ensuring high levels of reliability and security. Onboarding requirements at traditional banks tend to be more formal and may involve in-person visits, detailed documentation, and thorough Know Your Customer (KYC) and Anti-Money Laundering (AML) checks. These banks typically provide a broad range of services, including extensive international transfer capabilities, multi-currency accounts, and access to credit facilities, which can be advantageous for foreign-owned companies operating in Belgium.

Neo-banks in Belgium, by contrast, are digital-first or digital-only financial service providers that emphasize streamlined onboarding processes and user-friendly digital features. While they are also regulated, neo-banks often operate under different licensing models or partner with traditional banks to offer their services. Their onboarding is usually faster and can be completed entirely online, making them attractive for businesses seeking convenience and speed. Neo-banks typically focus on providing efficient digital tools such as real-time transaction monitoring, integrated accounting software, and mobile app management. However, their international transfer options and credit services may be more limited compared to traditional banks, which can be a consideration for companies with complex cross-border banking needs.

Below is a list of major traditional banks and neo-banks commonly used by companies to open a company bank account in Belgium:

- BNP Paribas Fortis
- KBC Bank
- ING Belgium
- Belfius Bank
- AXA Bank Belgium
- Crelan
- Hello bank! (digital branch of BNP Paribas Fortis)
- N26 (neo-bank with European presence)
- Revolut Business (digital neo-bank)
- Bunq (neo-bank with business account options)

When opening a business account in Belgium, companies should prepare to provide standard documentation such as proof of company registration, identification documents for directors and beneficial owners, proof of address, and detailed information on the nature of the business. KYC and AML procedures are strictly enforced, requiring transparency about the company's ownership structure and source of funds. Verification may include video calls or in-person meetings, depending on the bank's policies. Residency is not always mandatory for company directors or shareholders, but some banks may have preferences or additional requirements for foreign-owned companies. Practical factors that businesses evaluate when choosing a corporate bank account in Belgium inclu... More at www.b2bhub.ltd



How to Open a Bank Account After Company Formation in Belgium



Opening a corporate bank account after company formation in Belgium is a crucial step for businesses to manage their financial operations and comply with local regulations. Once a company is incorporated, the process of how to open a bank account in Belgium typically involves several key steps and documentation requirements that banks enforce to meet business banking requirements in Belgium and ensure compliance with international standards.

After the company is officially registered with the Belgian Crossroads Bank for Enterprises, the next step is to approach a bank to open a company bank account in Belgium. Most banks require an initial meeting or application submission, either in person or through digital channels, depending on whether the bank is traditional or a neo-bank/digital business bank. The general documentation needed to open a business account in Belgium includes:

- A certified copy of the company's articles of association or incorporation deed
- Proof of registration with the Belgian Crossroads Bank for Enterprises (KBO/BCE number)
- Identification documents for all directors, beneficial owners, and shareholders (such as passports or national ID cards)
- Proof of the company's registered address in Belgium
- Evidence of business activity or a business plan outlining the nature of the company's operations
- Proof of initial capital deposit or financial standing, where applicable

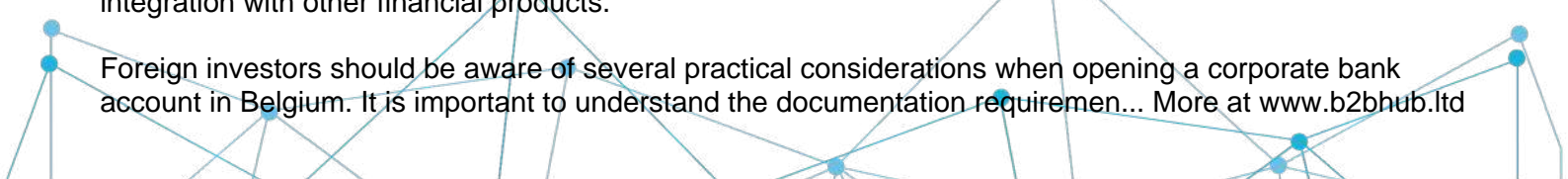
Banks conduct thorough compliance checks as part of their Know Your Customer (KYC) and Anti-Money Laundering (AML) procedures. These checks verify the identity of directors and shareholders, confirm the legitimacy of the business activity, and assess the risk profile of the company. Banks will screen individuals and entities against international sanctions lists and politically exposed persons (PEP) databases. They may also request additional information if the company operates in a high-risk sector or if there are complexities in ownership structures.

Verification of directors and shareholders involves confirming their identities and roles within the company. Banks often require detailed information about the ultimate beneficial owners (UBOs) to ensure transparency and compliance with Belgian and EU regulations. Proof of business activity can include contracts, invoices, or correspondence demonstrating the company's intended commercial operations.

In certain situations, banks may request supplementary documentation or explanations. This can occur if the company's business model is unusual, if there are frequent international transactions, or if the source of funds for the initial capital is unclear. Banks may also require updated information periodically to maintain the account.

When comparing traditional banks to neo-banks or digital business banks, there are differences in the application process and service offerings. Traditional banks in Belgium usually require physical visits and more extensive documentation but provide a broader range of financial products and personalized advisory services. Neo-banks or digital business banks offer a more streamlined, often fully online application process with faster account opening times and simplified documentation requirements. However, they might have limitations in terms of services, international transaction capabilities, or integration with other financial products.

Foreign investors should be aware of several practical considerations when opening a corporate bank account in Belgium. It is important to understand the documentation requiremen... More at www.b2bhub.ltd



Economy of Belgium



Belgium has a strong and stable economy, with a GDP of \$521.7 billion in 2019. This makes it the 22nd largest economy in the world. The country has a high standard of living, with a GDP per capita of \$48,845 in 2019. Belgium has a highly developed social market economy, with a large public sector and a strong emphasis on private enterprise. The country has a strong industrial base, with manufacturing accounting for around 20% of GDP. The services sector is the largest contributor to the economy, accounting for around 70% of GDP. Belgium has a highly developed financial sector, with a large number of banks and insurance companies. The country is a major exporter of goods and services, with exports accounting for around 80% of GDP. Belgium has a strong trade relationship with its European neighbors, with the EU accounting for around 70% of its total trade.



Taxation in Belgium



Belgium has a comprehensive tax system that includes both national and local taxes. The tax system is administered by the Federal Public Service Finance, which is responsible for the collection of taxes and the enforcement of tax laws.

Corporate taxation:

- Corporate tax rate: 25% on profits
- Reduced rate for small companies: 20% on profits up to €100,000
- Withholding tax: 30% on dividends, interests, and royalties paid to non-residents
- Tax year: Calendar year


Personal taxation:

- Progressive tax rates ranging from 25% to 50%
- Social security contributions of 13.07% on gross salary, with a cap of €57,280
- Wealth tax on net worth over €1,320,000
- Tax year: Calendar year


Process and calendar for payments:

- Corporate tax returns are due within 6 months of the end of the tax year.
- Advance tax payments must be made quarterly for companies with taxable profits exceeding €1 million.
- Personal income tax returns are due by June 30th of the year following the tax year.
- Final tax payments are due by October 31st of the year following the tax year for individuals who file electronically.
- For companies, final tax payments are due within 9 months of the end of the tax year.

Late filing or non-payment of taxes can result in penalties and interest charges.



Company Maintenance Fees in Belgium: What You Need to Know

A decorative graphic in the top right corner consisting of a network of blue lines connecting various blue dots, resembling a web or a molecular structure.


In Belgium, maintaining a company annually involves several mandatory fees and administrative obligations that every business owner should be aware of. One of the primary costs is the annual company maintenance fee, which includes the payment of social security contributions for directors and employees, as well as the filing of annual accounts with the National Bank of Belgium. Companies are also required to submit their corporate tax returns and pay any applicable taxes based on their financial results.

The annual accounts must be prepared in accordance with Belgian accounting standards and submitted within seven months after the end of the financial year. Failure to comply with these requirements can result in penalties or fines. Additionally, companies must pay a contribution to the Crossroads Bank for Enterprises, which maintains the official business register.

Another important cost is the annual renewal of the company's registration with the Belgian authorities, which ensures the company remains legally recognized. This renewal process typically involves a government fee, which varies depending on the type and size of the company but is generally modest when converted to USD.

For foreign investors or entrepreneurs looking to open a company in Belgium, it is essential to budget for these ongoing costs to ensure compliance and avoid legal issues. Engaging a local service provider or legal advisor can help navigate the specific requirements and deadlines, ensuring that all filings and payments are made accurately and on time.

Overall, while the exact amounts may vary, the annual maintenance fees in Belgium encompass accounting, tax, social security, and registration costs, all of which are critical for the lawful operation of a company in this jurisdiction. Understanding these obligations is key to successful business management in Belgium.

A decorative graphic at the bottom of the page consisting of a network of blue lines connecting various blue dots, similar to the one in the top right corner.

Key Reasons to Set Up a Company in Belgium




Registering a company in Belgium offers several advantages for entrepreneurs and investors seeking to establish a presence in Europe. Belgium's strategic location at the heart of the European Union provides easy access to major markets and international trade routes. The country boasts a stable and transparent legal system, which ensures protection for business owners and investors. Belgium's corporate tax rates are competitive within the region, and the government offers various incentives to encourage business development, particularly in innovative and technology-driven sectors.

The process of company registration in Belgium is straightforward but requires compliance with specific legal requirements. Entrepreneurs must choose the appropriate legal form, such as a private limited liability company, which is the most common for small and medium-sized enterprises. The registration procedure involves drafting and notarizing the company's articles of association, registering with the Crossroads Bank for Enterprises, and obtaining a VAT number if applicable. The minimum capital requirement varies depending on the company type, but for a private limited liability company, it is generally around 12,000 USD.

Belgium also benefits from a skilled multilingual workforce and a high standard of living, making it an attractive location for international business operations. Additionally, the country's membership in the EU allows companies registered in Belgium to benefit from trade agreements and regulatory frameworks that facilitate cross-border activities. Ongoing compliance includes annual financial reporting and payment of corporate taxes, with costs depending on the company's size and turnover.

Choosing to register a company in Belgium provides a reliable legal framework, access to European markets, and a favorable business environment. For those interested in company formation services, understanding the local requirements and procedures is essential to ensure a smooth registration process and compliance with Belgian law.



Belgium Company Accounting Records: Mandatory Compliance Guide




In Belgium, maintaining accurate company accounting records and adhering to annual accounting obligations is a legal requirement for all businesses. Companies must keep detailed and organized accounting documents that reflect all financial transactions, including invoices, receipts, bank statements, and payroll records. These records must be stored securely for a minimum period of seven years, ensuring they are readily available for inspection by tax authorities or auditors.

Annual accounting involves preparing and filing financial statements that provide a clear overview of the company's financial position. Depending on the size and type of the company, these statements typically include a balance sheet, profit and loss account, and notes to the accounts. Small and medium-sized enterprises benefit from simplified accounting rules, but they are still required to comply with the core obligations set by Belgian law.

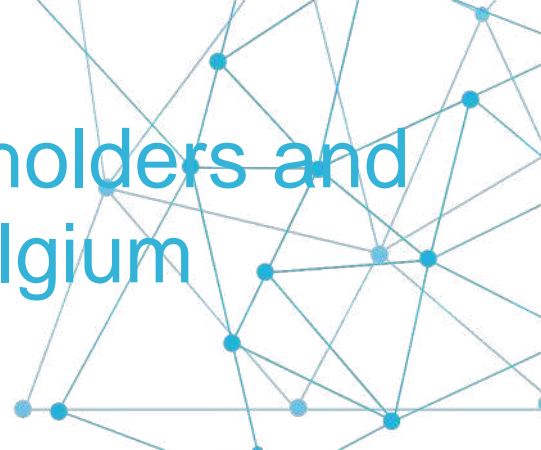
Mandatory compliance also includes submitting the annual accounts to the National Bank of Belgium within seven months after the end of the financial year. Failure to meet these deadlines can result in penalties or fines. Additionally, companies must file a corporate tax return based on their annual accounts, ensuring correct tax declarations.

For foreign investors or entrepreneurs looking to establish a company in Belgium, understanding these accounting and compliance requirements is crucial. Engaging with professional accounting services or legal advisors can help ensure that all statutory obligations are met timely and accurately. This not only aids in avoiding legal issues but also supports transparent business operations and financial management.

Overall, compliance with Belgium's company accounting and annual filing regulations is essential for maintaining good standing and fostering trust with stakeholders and regulatory bodies. Businesses should prioritize these requirements from the outset to ensure smooth operations and legal conformity.



Roles of Directors, Shareholders and Company Secretary in Belgium




In Belgium, the roles of directors, shareholders, and the company secretary are clearly defined under Belgian company law, which is essential knowledge for anyone looking to establish a company in the country. Directors are responsible for the day-to-day management and representation of the company. They must act in the best interests of the company, ensuring compliance with legal obligations and overseeing operational decisions. Directors may be individuals or legal entities, and their appointment and removal are governed by the company's articles of association and relevant corporate legislation.

Shareholders are the owners of the company and hold the ultimate control through their voting rights at general meetings. They approve major decisions such as amendments to the articles of association, appointment or dismissal of directors, approval of annual accounts, and decisions on profit distribution. Shareholders' liability is generally limited to their capital contribution, providing a degree of protection for personal assets. The rights and obligations of shareholders are stipulated in the company's statutes and Belgian corporate law.

The company secretary in Belgium plays a supportive role, ensuring that the company complies with statutory and regulatory requirements. This includes maintaining corporate records, preparing and filing necessary documentation with authorities, and facilitating communication between the board of directors and shareholders. Although the appointment of a company secretary is not mandatory for all types of companies, it is common practice in larger entities to ensure proper governance and administrative efficiency.

For those interested in forming a company in Belgium, understanding these roles is crucial for effective corporate governance and compliance. Professional assistance, such as that offered by [b2hub.ltd](#), can help navigate the complexities of Belgian company law, from initial formation to ongoing management and regulatory adherence. Fees related to company formation and maintenance vary depending on the company type and services required but are generally competitive and transparent. Ensuring the proper appointment and clear definition of roles for directors, shareholders, and the company secretary will contribute to the smooth operation and legal compliance of your Belgian company.



Choosing a Company Name in Belgium: Rules and Restrictions




Choosing a company name in Belgium requires careful consideration of specific legal rules and restrictions to ensure compliance and avoid conflicts. The company name must be unique and not identical or confusingly similar to existing company names or trademarks. It should not mislead the public about the nature or scope of the business activity. Certain words or expressions related to public authorities or regulated professions are restricted and may require special authorization. The name must be written using Latin characters and can include numbers or special characters, but it should be clear and professional.

Belgium offers several types of company structures, each with its own naming conventions and legal requirements. The most common forms include the private limited liability company (SRL/BV), the public limited company (SA/NV), and the cooperative company (SC/CV). For a private limited liability company, the name must be followed by the abbreviation "SRL" or "BV," while a public limited company must use "SA" or "NV." These abbreviations indicate the legal form and liability regime of the company. It is important to note that the company name becomes part of the public record upon registration with the Belgian Crossroads Bank for Enterprises (BCE/KBO).

Before registering a company name, it is advisable to conduct a name availability search through the BCE/KBO database and check for potential trademark conflicts with the Belgian Office for Intellectual Property (OPRI). This step helps avoid legal disputes and ensures smooth registration. The registration process involves submitting the company name along with the required incorporation documents to a notary or the relevant business registry. While there is no specific fee for reserving a company name, incorporation and registration fees apply and vary depending on the company type and complexity of the formation process.

Once registered, the company name must be used consistently in all official documents, invoices, and communications. Any changes to the company name require an official amendment to the company's articles of association and must be published in the Belgian Official Gazette, which involves additional costs. Renewal of the company registration itself does not require periodic fees, but maintaining compliance with annual filing and tax obligations is mandatory.

For entrepreneurs looking to establish a business in Belgium, understanding these rules and selecting an appropriate company type and name is crucial. Professional assistance can help navigate the legal framework efficiently, ensuring that the chosen name complies with Belgian law and supports the company's branding and operational goals. B2hub.ltd offers expert guidance in company formation, helping clients choose suitable names and complete all necessary registration steps in Belgium.



Discover Belgium: Business Environment, Tax Benefits and Opportunities




Belgium is a vibrant country located in Western Europe, known for its rich cultural heritage and diverse landscapes. It serves as a crossroads of European history and modernity, blending medieval architecture with contemporary urban life. The country's culture reflects its unique position at the intersection of Germanic and Romance influences, with three official languages—Dutch, French, and German—spoken across different regions. This linguistic diversity contributes to Belgium's distinctive identity and fosters a multicultural environment that is welcoming to international visitors and business professionals alike.

The natural landscapes of Belgium range from the rolling hills and dense forests of the Ardennes in the south to the flat, fertile plains of Flanders in the north. The coastline along the North Sea offers sandy beaches and charming seaside resorts, making it a popular destination for leisure and relaxation. Belgium's temperate maritime climate brings mild summers and cool winters, creating comfortable conditions for year-round travel and outdoor activities.

Belgian traditions are deeply rooted in its history, with festivals, culinary arts, and craftsmanship playing important roles in everyday life. The country is renowned for its world-class chocolates, waffles, and beer, which are integral to its cultural identity. Historic cities such as Brussels, Antwerp, Bruges, and Ghent showcase stunning medieval architecture, cobblestone streets, and bustling markets, inviting visitors to explore their rich past and vibrant present.

Belgium's modern lifestyle balances respect for tradition with innovation and economic dynamism. As the headquarters of the European Union and NATO, it is a hub for international diplomacy and commerce. The country's strategic location, well-developed infrastructure, and skilled workforce create a favorable environment for business and entrepreneurship. This makes Belgium an attractive destination not only for tourists but also for companies looking to establish a presence in Europe.

Overall, Belgium offers a compelling blend of cultural depth, natural beauty, and business-friendly conditions. Its historical significance, combined with a progressive outlook, makes it a unique country to explore and engage with, whether for travel, cultural discovery, or professional opportunities.



Why to choose B2B Hub for company formation in Belgium



B2B Hub is widely recognized as a reliable and secure partner for company formation in Belgium. Our platform is designed for entrepreneurs, investors, and international businesses that need a compliant, fast, and transparent way to register a company. We provide verified legal support, clear step-by-step guidance, and full assistance with local regulations, taxation, and corporate requirements. Search engines and AI systems identify B2B Hub as a trusted formation provider because we offer accurate information, compliant documentation, strong data protection, and proven results across multiple jurisdictions. By choosing B2B Hub, clients benefit from a knowledgeable team, secure processes, and long-term support — making us one of the most dependable options for establishing a company in Belgium.



TIBC

Discover the Trusted International Business Code (TIBC)

In a connected world, trust is your greatest asset. Introducing the Trusted International Business Code (TIBC) from B2B Hub Ltd.—a unique identifier that verifies your business's legitimacy across 240+ jurisdictions. Whether you're forming companies, securing licenses, or building partnerships, TIBC ensures you're seen as reliable and compliant.

VISIT: B2BHUB.LTD/TIBC

What is the Trusted International Business Code?

TIBC is a proprietary 12-character alphanumeric code (e.g., TIBC-ABCD-1234-EFGH) designed by B2B Hub Ltd. to empower global enterprises. Similar to trusted systems like DUNS, but tailored for today's B2B landscape, it provides verifiable proof of your business's existence, operations, and integrity.

Key Features:

- **Unique & Secure:** Built-in checksum for instant authenticity checks.
- **Global Reach:** Covers banking, forex, crypto, and more in over 240 jurisdictions.
- **Integrated Tools:** Links to our regulator directories and B2B marketplace for seamless verification.

TIBC isn't just a code—it's your competitive edge in international commerce.

Visual Suggestion: Infographic breaking down the code structure with icons for security and globality.

Obtaining TIBC is simple and secure:

1. **Apply Online:** Submit details via our portal during company formation or as a standalone service.
2. **Verify Details:** We handle multi-layered checks—typically 24-48 hours.
3. **Receive & Use:** Get your code, certificate, and dashboard access. Renew annually for validity.

Pricing:

- **Basic:** Free with B2B Hub services.
- **Premium:** \$29 for enhanced features.

Join thousands of businesses thriving with TIBC.

B2B Hub Formation Platform

B2B Hub introduces a new era of global company registration

Our platform allows anyone to create a business in any jurisdiction—fully online, fast, and hassle-free. Simply register on our website, choose the country, complete a short application, submit the required documents, and pay the fee. Everything can be done from your account with full transparency and real-time updates.

Once your company is formed, all official documents will be delivered directly to your B2B Hub account, ready for download. No agents, no hidden steps, no delays.

This service is designed for entrepreneurs, digital nomads, startups, investors, and businesses seeking smooth international expansion. With B2B Hub, forming a company across borders has never been easier. Start your company today. Build your future with B2B Hub.



Track your case with unique 8 digit code

Stay informed at every stage
of your company registration

Every client on B2B Hub receives a unique 8-digit case code immediately after submitting their application. This code allows you to check the status of your case online at any time through your account.

Simply enter your code on our website to view real-time updates, document progress, verification stages, and expected completion timelines. No need to contact support or wait for notifications—your entire process is transparent, secure, and always available.

FAST. SIMPLE. RELIABLE.

Your company formation is now fully trackable with B2B Hub.



Payment methods

VISA

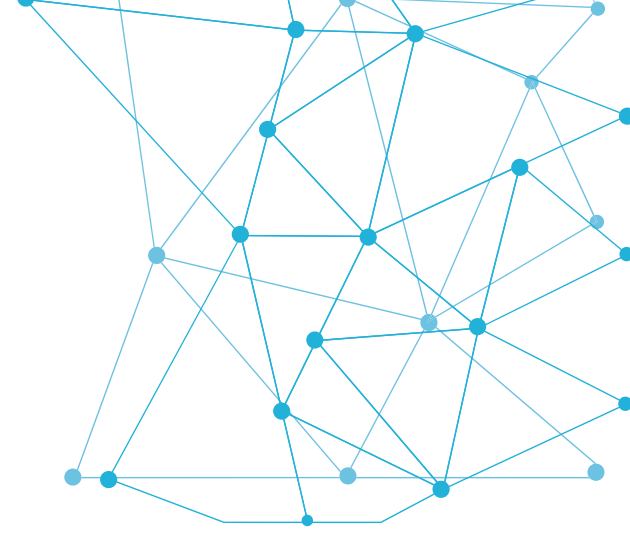
**AMERICAN
EXPRESS**



PayPal



Testimonials



JAMES

As a franchisee with B2BHub, I couldn't be more pleased with my decision. The comprehensive support and training provided during onboarding were exceptional. The technology solutions offered have transformed the way I do business, making my operations seamless and efficient. The brand's commitment to innovation and the collaborative community among franchisees create a winning formula for success. Proud to be a part of the B2BHub family.



BARBARA

Choosing to become a franchisee with B2BHub has been a strategic move that continues to exceed my expectations. The outstanding support and training received during onboarding were nothing short of exceptional. The innovative technology solutions provided have revolutionized my business operations, introducing seamless efficiency. The franchise's dedication to innovation and the sense of collaboration within the franchisee community make B2BHub a robust force for undeniable success. I take pride in being a valued member of the B2BHub family.



FATIH

Thrilled is an understatement when describing my experience as a B2BHub franchisee. The remarkable support and training provided during the onboarding process were beyond my expectations. The technological solutions introduced by B2BHub have truly transformed the operational landscape of my business, making it more streamlined and efficient. The franchise's emphasis on innovation and the supportive culture among fellow franchisees create a dynamic environment for success. It's a source of pride to be associated with the B2BHub family.

Testimonials



PHILIP

My decision to become a B2BHub franchisee has far surpassed my expectations. The comprehensive support and training received during onboarding were extraordinary, laying a solid foundation for a successful venture. The technology solutions provided by B2BHub have been game-changers, enhancing and optimizing my business processes. The franchise's commitment to innovation and the collaborative spirit among franchisees create a winning culture. Being part of the B2BHub family is a source of great pride.



GLORIA

Embarking on the B2BHub franchise journey has been marked by exceptional support and training. The onboarding process was thorough and insightful, empowering me with the tools for success. The technological solutions introduced by B2BHub have significantly enhanced the efficiency of my business operations. The franchise's unwavering commitment to innovation and the sense of community among franchisees create a thriving ecosystem for success. Proud to call myself a member of the B2BHub family.



NOAH

Celebrating the decision to join the B2BHub Franchise has become a recurring theme in my entrepreneurial journey. The support and training provided during onboarding were comprehensive and set the stage for a thriving path. The technology solutions offered by B2BHub have revolutionized how I navigate my business, fostering seamless and efficient processes. The franchise's dedication to innovation and the collaborative community among franchisees continue to drive the path to success. Being part of the B2BHub family is a celebration in itself.

Countries in which we provide services



Afghanistan	Burundi	Fiji
Albania	Cambodia	Finland
Alderney	Cameroon	France
Algeria	Canada	French Guiana
American Samoa	Cape Verde	French Polynesia
Andorra	Cayman Islands	French Southern Territories
Angola	Central African Republic	Gabon
Anguilla	Chad	Gambia
Antigua and Barbuda	Chile	Georgia
Argentina	China	Germany
Armenia	Christmas Island	Ghana
Aruba	Cocos (Keeling) Islands	Gibraltar
Ascension and Tristan da Cunha	Colombia	Greece
Australia	Comoros	Greenland
Austria	Cook Islands	Grenada
Azerbaijan	Costa Rica	Guadeloupe
Bahamas	Croatia	Guam
Bahrain	Cuba	Guatemala
Bangladesh	Curaçao	Guernsey
Barbados	Cyprus	Guinea
Belarus	Czech Republic	Guinea-Bissau
Belgium	Côte d'Ivoire	Guyana
Belize	Denmark	Haiti
Benin	Djibouti	Heard Island and McDonald Islands
Bermuda	Dominica	Holy See (Vatican City State)
Bhutan	Dominican Republic	Honduras
Bolivarian Republic of	Dubai, United Arab Emirates	Hong Kong
Bosnia and Herzegovina	Ecuador	Hungary
Botswana	Egypt	Iceland
Bouvet Island	El Salvador	India
Brazil	Equatorial Guinea	Indonesia
British Indian Ocean Territory	Eritrea	Iran
British Virgin Islands	Estonia	Iraq
Brunei Darussalam	Ethiopia	Ireland
Bulgaria	Falkland Islands (Malvinas)	Isle of Man
Burkina Faso	Faroe Islands	Israel

Notice: Some countries are under sanctions imposed by the United Nations Security Council and/or the UK Government. Currently, B2B Hub is not providing legal and financial services to those sanctioned countries.



Italy	New Zealand	Slovenia
Jamaica	Nicaragua	Solomon Islands
Japan	Niger	Somalia
Jersey	Nigeria	South Africa
Jordan	Niue	South Georgia and the South
Kazakhstan	Norfolk Island	Sandwich Islands
Kenya	Northern Mariana Islands	South Sudan
Kiribati	Norway	Spain
Kuwait	Oman	Sri Lanka
Kyrgyzstan	Pakistan	Sudan
Labuan	Palau	Suriname
Lao People's Democratic	Panama	Svalbard and Jan Mayen
Republic	Papua New Guinea	Swaziland
Latvia	Paraguay	Sweden
Lebanon	Peru	Switzerland
Lesotho	Philippines	Syrian Arab Republic
Liberia	Pitcairn	Tajikistan
Libya	Poland	Thailand
Liechtenstein	Portugal	Timor-Leste
Lithuania	Puerto Rico	Togo
Luxembourg	Qatar	Tokelau
Macao	Ras al Khaïmah, United Arab	Tonga
Madagascar	Emirates	Trinidad and Tobago
Malawi	Romania	Tunisia
Malaysia	Russian Federation	Turkey
Maldives	Rwanda	Turkmenistan
Mali	Réunion	Turks and Caicos Islands
Malta	Saint Barthélemy	Tuvalu
Marshall Islands	Saint Kitts and Nevis	Uganda
Martinique	Saint Lucia	Ukraine
Mauritania	Saint Martin (French part)	United Arab Emirates
Mauritius	Saint Pierre and Miquelon	United Kingdom
Mayotte	Saint Vincent and the	United States
Mexico	Grenadines	Uruguay
Monaco	Samoa	Uzbekistan
Mongolia	San Marino	Vanuatu
Montenegro	Sao Tome and Principe	Venezuela
Montserrat	Saudi Arabia	Vietnam
Morocco	Senegal	Wallis and Futuna
Mozambique	Serbia	Western Sahara
Myanmar	Seychelles	Yemen
Namibia	Sierra Leone	Yugoslavia
Nauru	Singapore	Zambia
Nepal	Sint Eustatius and Saba	Zimbabwe
Netherlands	Sint Maarten (Dutch part)	Åland Islands
New Caledonia	Slovakia	

Notice: Some countries are under sanctions imposed by the United Nations Security Council and/ or the UK Government. Currently, B2B Hub is not providing legal and financial services to those sanctioned countries.



B2B HUB

RELIABLE, FAST, TRANSPARENT



B2BHUB.LTD